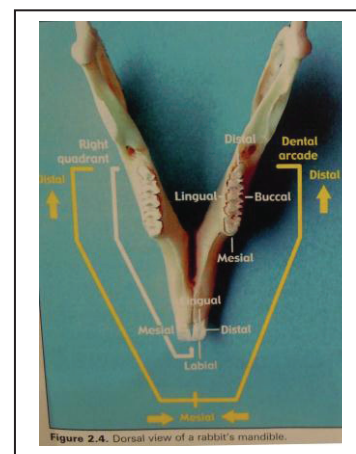
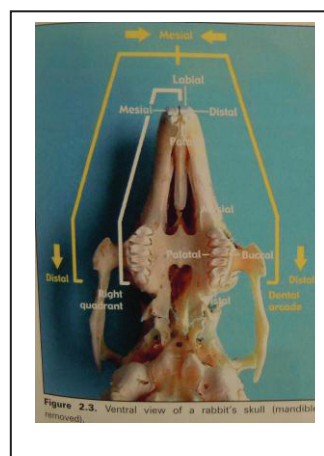
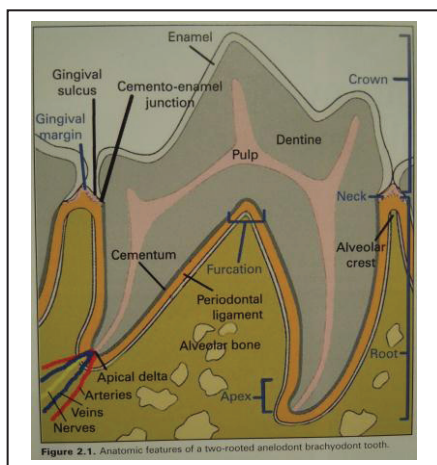
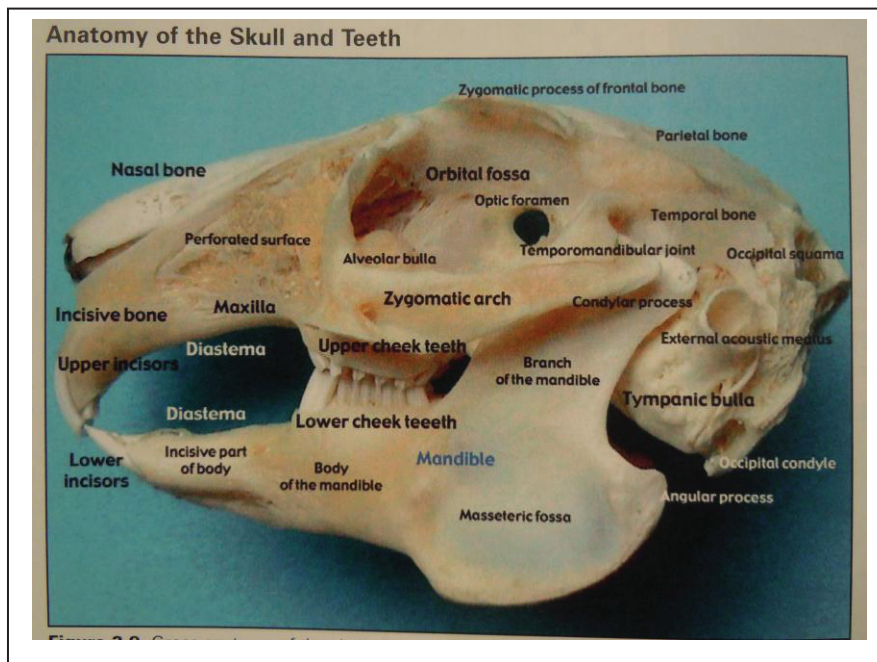
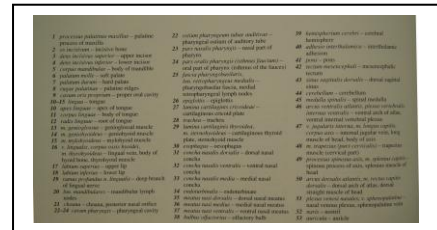
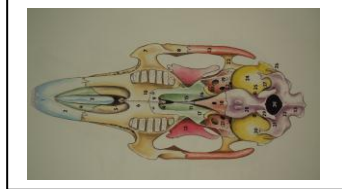
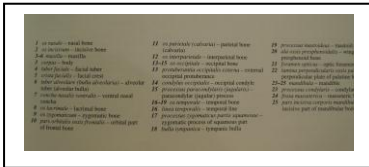
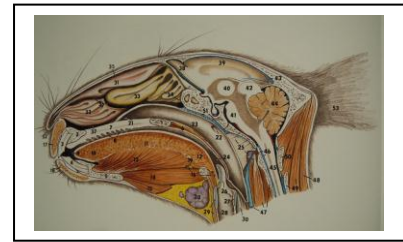
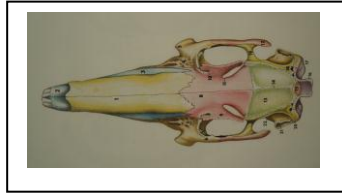
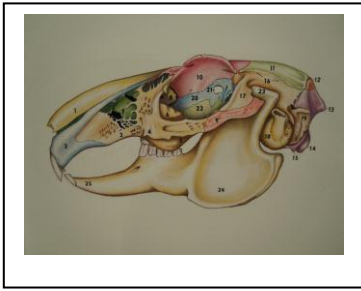


## RABBIT SKULL ANATOMY AND RADIOGRAPHY

### Anatomy

Capello, V. 2005





### Dental radiographic views



### Useful equipment

- 20-40° angle foam wedge for Lateral Oblique positions
- Towels for restraint
- Radiographic film and Left/Right marker
- Foam cradle if using dorsal recumbency positions
- Sand bags
- Reduced adhesive tape e.g. Micropore®



### Dental disease

