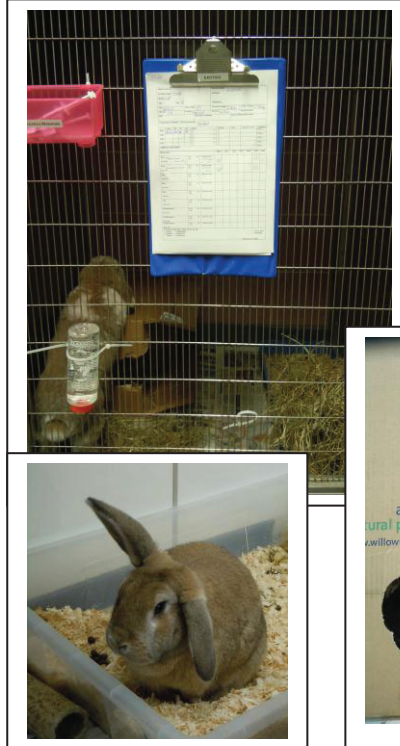


Basic hospitalisation of rabbit patients

Basic set up

- Newspaper flooring; absorbs and warm but some can chew excessively
- Hide box; bigger than body size
- Water dropper bottle and/or bowl; adlib, daily measured and refreshed. It helps to know what each rabbit normally drinks from.
- Hay bundle preferably Timothy Rich Meadow Hay (bundle size of bunny)
- Litter tray with cat litter or hay; rabbits generally prefer a specific toilet area away from bedding.



Diet - Hay is essential; daily remove any soiled and top up with fresh

- Pellets or mix; depending on normal diet although a small amount of complete pellets can be offered e.g. 20g/rabbit/day



Environment temperature

- Body temperature should be checked routinely once to twice daily, but not excessively due to stress.
 - Environmental/ambient temperature adjusted in relation to body temperature
 - Patients may require being placed in an incubator and close monitoring
- Rabbits are prone to heat stress in environmental temperatures above 22°C; maintain environmental temperature between 18-22 °C

